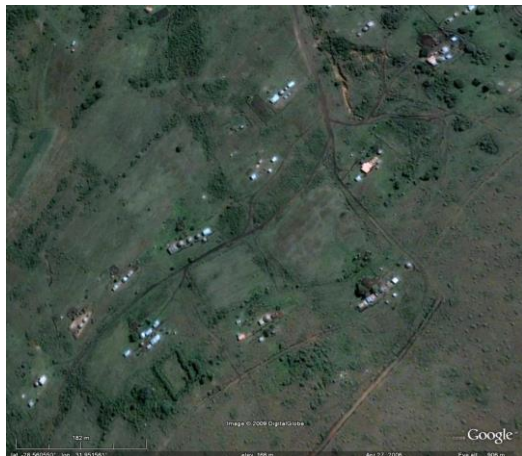


Grade 8 Social Sciences Worksheet

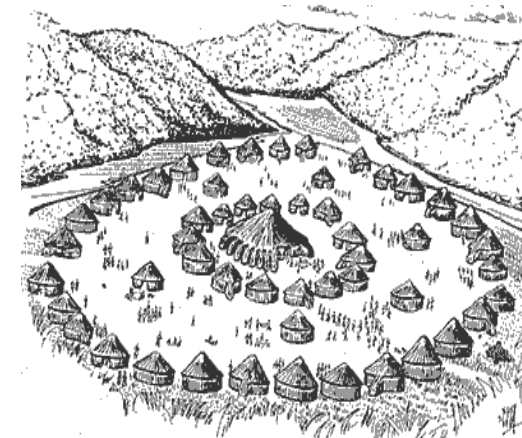
Urbanisation



A
B



C
D



E
F



Grade 8 Social Sciences Worksheet

1. Choose an appropriate label for each one from the following list. You may not use a word twice. [6]
circular; urban; nucleated; linear; dispersed; rural
2. What are the advantages of living in
 - 2.1 a dispersed settlement?
 - 2.2 a nucleated settlement?
 [6]
3. Why are some settlements linear? Refer to the photographs to support your answer. [4]
4. Refer to photographs B and F. Write a brief description of how life differs living in these two settlements. [5]
5. Which settlement, B, C or F, makes the most **sustainable use of its resources**? Justify your answer by pointing out information that you can see in the photographs. [10]
6. Choose the correct definition for A, B, C and D: [4]
 - 6.1 The increase in the number of people
 - 6.2 The decline in the number of people living in the country areas
 - 6.3 A very large city
 - 6.4 The change from rural living to urban living

A Rural depopulation
B urbanisation
C megalopolis
D population growth

7. Study the two graphs in Figures 1 and 2.

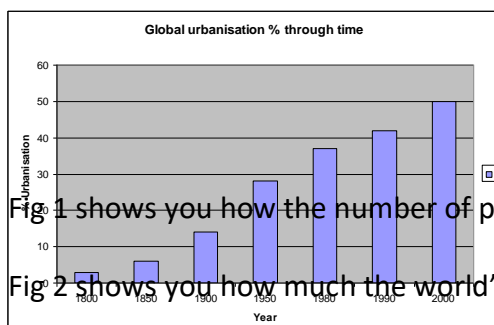
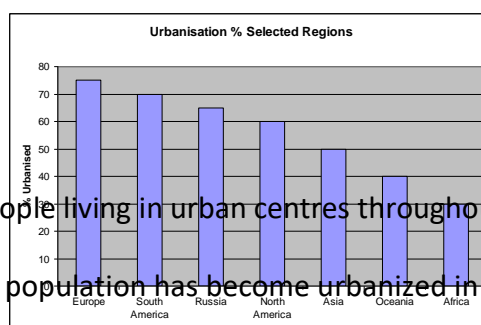


Fig 1 shows you how the number of people living in urban centres throughout the world increased since 1800.

Fig 2 shows you how much the world's population has become urbanized in each continent.

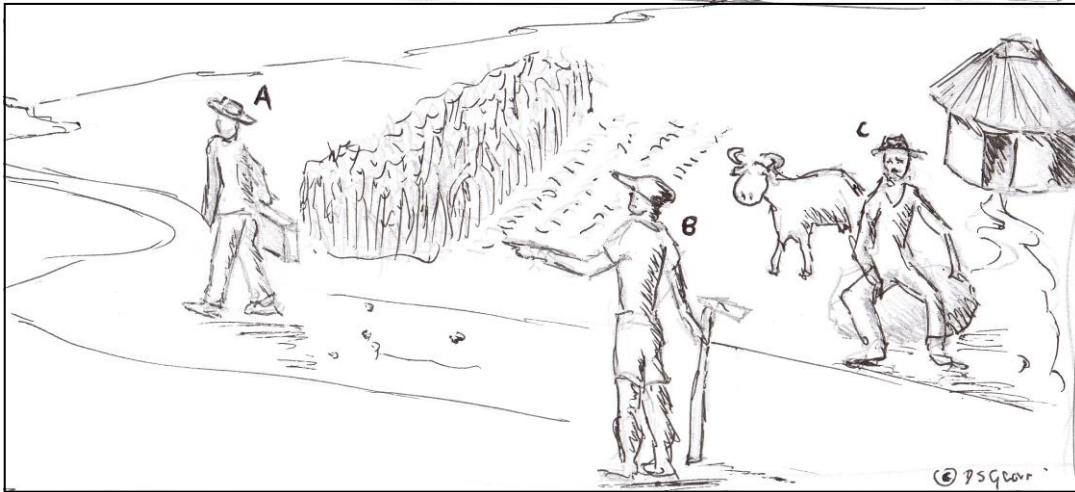


Answer the following:

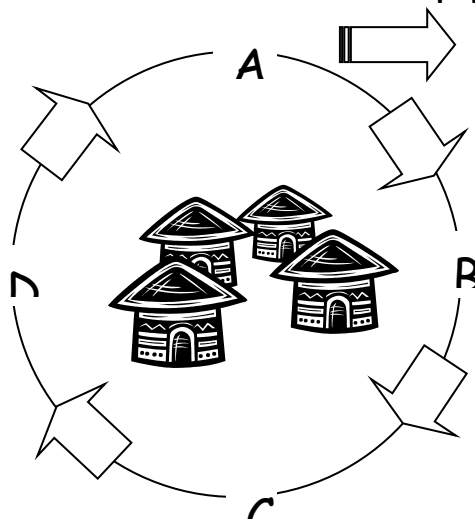
- 7.1 Which continent is the most urbanised? [1]
- 7.2 Which continent is the least urbanised? [1]

Grade 8 Social Sciences Worksheet

- 7.3 Explain the reason for the above situation. [4]
8. Why do you think such a large percentage of the world's population became urbanised between 1850 and 1950? [4]
9. Study the illustration below.



- 9.1 Give this picture a title. [2]
- 9.2 Write a caption for each of the characters at A, B and C in the picture. [3]
10. What factors in the village caused A to leave? [6]
11. Write a description of what happens to person A when he arrives in the city. [6]
12. Many people are attracted to cities from rural areas. List four PULL factors. [8]
13. The movement away from rural areas results in **rural depopulation**. Refer to the diagram below.



Grade 8 Social Sciences Worksheet

- 13.1 A – Which population group leaves the rural areas? [2]
- 13.2 B – Who remains to work in the rural areas? [2]
- 13.3 C – How does this impact on the work done in rural areas? [2]
14. D – What effect does this movement away from the rural area have on the people left behind? [6]
15. What can be done to lessen the problems of people in depopulated rural areas? [8]
16. Rapid urbanisation results in the growth of informal settlements and shack towns. Compare the problems of living in poor rural areas with living in an urban shack settlement. [10]

[Total: 100 marks]

Grade 8 Social Sciences Worksheet

Suggested Solutions

1. A) Linear; B) Nucleated; C) Dispersed / Rural; D) Urban; E) Circular; F) Rural
- 2.1 Control over your own land. Privacy. Not far to walk to your fields.
- 2.2 Security; access to a single water point; sense of community
3. In A, it is linear along a road. Other features that might cause linear settlements include rivers and coasts. Sometimes linear settlements develop along a bottom of a slope (Photo F) or along the top of a ridge.
4. In Photo B, the people are living in a commercial farming environment in a first-world country. In photo B it is in a third-world country.
A will have tap water, electricity and good transport routes. In B you probably have to walk to fetch water from a river or spring. There is no electricity and very poor transport.
5. B probably uses a lot of electricity as well as chemicals on the farms. C is a subsistence area where each farmer appears to have sufficient land for him or herself. This is sustainable. Photo F appears to be over-using the land, farming crops on very steep slopes, which suggests that the area is over-populated. Any other good points.
6. 6.1 D
6.2 A
6.3 C
6.4 B
7. 7.1 Europe
7.2 Africa
7.3 Most people in Europe are employed in service industries. Most people in Africa
are employed in farming. Commercial farming in Europe employs very few people.
8. The expansion of large-scale commercial farming reduced the number of farmers and farm labourers that were needed, creating unemployment in rural areas, so many people moved to the cities to find work. Better paid work in the factories of the industrial revolution promised a better life.
- 9.1 Anything that highlights the fact that A is leaving the rural area. Anything to do with rural-urban migration.
- 9.2 A is leaving the rural area (anything that conveys this message).

Grade 8 Social Sciences Worksheet

- B is a farmer (he has a hoe). Anything that conveys that message. He may be telling A to go to the city, there is no job here.
C has got nothing to do. He is bored.
10. Poor/hard living conditions, lack of money; loss of rural jobs; the need to earn money to make ends meet.
 11. Often ends up living in a shack settlement. Rural skills not adequate for urban job. Ends up earning very little as a labourer/piece worker. Subject to crime and disease.
 12. Better paid jobs; more jobs; more exciting lifestyle; better education and health facilities. Any other sensible pull factor.
 13.
 - 13.1 Mostly young men or young adults in general.
 - 13.2 The old and the young, mostly female.
 - 13.3 Work requiring strong young people, especially men, gets neglected.
 14. The people left behind often suffer from malnutrition; breakdown of social structures – no man in the house. Children are looked after by grandparents, who are not always able to control the older children.
 15. This is an open-ended question. Any sensible suggestion(s) supported by a good argument.
 16. Poor rural areas are generally peaceful and relatively safe in terms of crime. Rural areas may struggle to find sufficient food, especially in times of drought. They are dependent on river water, which in a rural area is probably reasonably clean. In urban shack settlements, there is often no good clean water and sewerage is poor, resulting in disease. Conditions are overcrowded and there is a lack of privacy and often a high crime rate. Both societies will experience a breakdown of social structures.